



Dual myAquaSolar

instruction manual

EN

8498

claber

WARNING

Read this instruction manual carefully and keep it handy for future reference.

This device has been designed and manufactured exclusively for the setting of watering time by adults with experience and knowledge. The product must not be used by minors and people who do not understand these instructions or are under the influence of drugs or alcohol. People who have mobility/psychological impairments must be supervised during its use. Make sure that children do not play with the device.

Do not power the water timer with sources other than those specified (built-in photovoltaic panel). Do not use the water timer with chemicals or liquids other than water.

At the end of the season, before the winter frosts, disconnect the timer from the tap and store the timer in a sheltered place, away from damp, where the temperature does not fall below 3°C.

Any use other than that described in this manual is considered improper: the manufacturer acknowledges no liability for damages arising from improper use, which will also void the warranty.

The product emits a low-intensity electromagnetic field.

There is, however, a possibility of interference with active or inactive medical devices.

The packaging and some small parts may lead to the risk of suffocation if swallowed. Keep children away during installation and use.

GENERAL INFORMATION

Solar-powered timer operates without batteries and can be controlled solely by smartphone via the myAquaSolar app and Bluetooth® technology.

The product is designed solely for private domestic use, outdoors, to control watering systems, and can be used in automatic mode even when there is no power.

The product must not be used for industrial purposes, with liquids other than water, or for food purposes. Use water from the mains tap or filter the water before using it.

Use of the product must respect the required values for temperature and pressure.

Never remove the control unit while watering is in progress; the flow of water will not stop.

The product does not need batteries to operate but instead works on solar energy alone.



**Not resistant
to low
temperatures**



**Not suitable
for children**



**No batteries
needed**



**Filtered water
only**



**Do not
immerse in
any liquid**



Not indoors

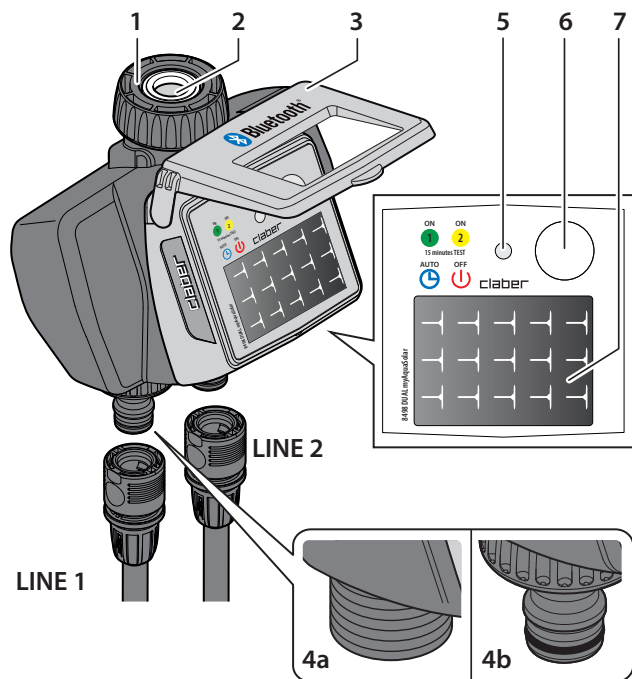
TECHNICAL DATA

Power supply	Photovoltaic panel
Irrigation cycles with maximum charge	20
Degree of protection	IP 22
Bluetooth® version used	5.2
Minimum Bluetooth® version required	4.1
Operating temperature	3-50 °C
Operating pressure	MIN: 0,5 bar MAX: 10 bar
Plastic materials	>ABS< >PC< >POM< >TPE<

Water pressure table

Bar	0,5	1	2	2,5	3	4	5
l/min	16	20	28	30	32	38	42

DESCRIPTION



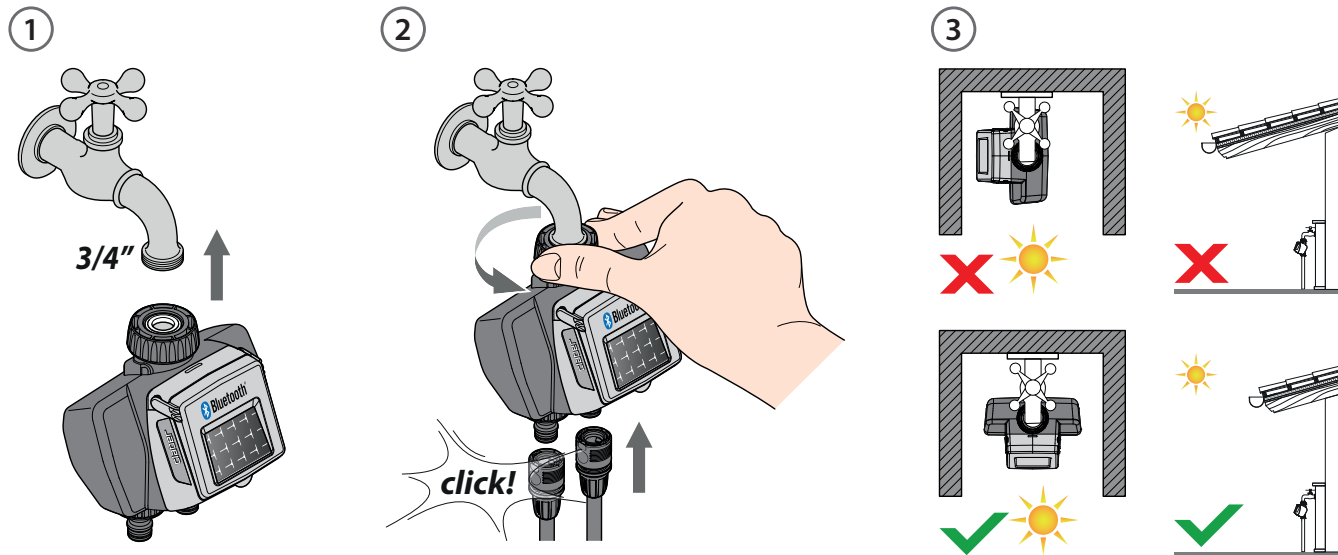
- 1 3/4" tap connector F with screw coll
- 2 Inspectable and washable filter
- 3 Protective cover
- 4a 3/4" M threaded connector
- 4b Quick-Click male connector
- 5 LED:
 - automatic watering active
 - watering in progress on line 1
 - watering in progress on line 2
 - automatic watering not active
- 6 Function/colour selection button
- 7 Photovoltaic panel

INSTALLATION

Do not install the water timer inside valve boxes, below ground level or indoors. Do not use the water timer with operating pressures lower than 0.5 bar (7.3 psi) or higher than 10 bar (145psi).

Always keep the cover closed.

Once the timer is installed, make sure that the photovoltaic panel is pointed in the direction of the open area from which most light comes during the day. This is to ensure it charges correctly.



RAIN SENSOR INSTALLATION (OPTIONAL)

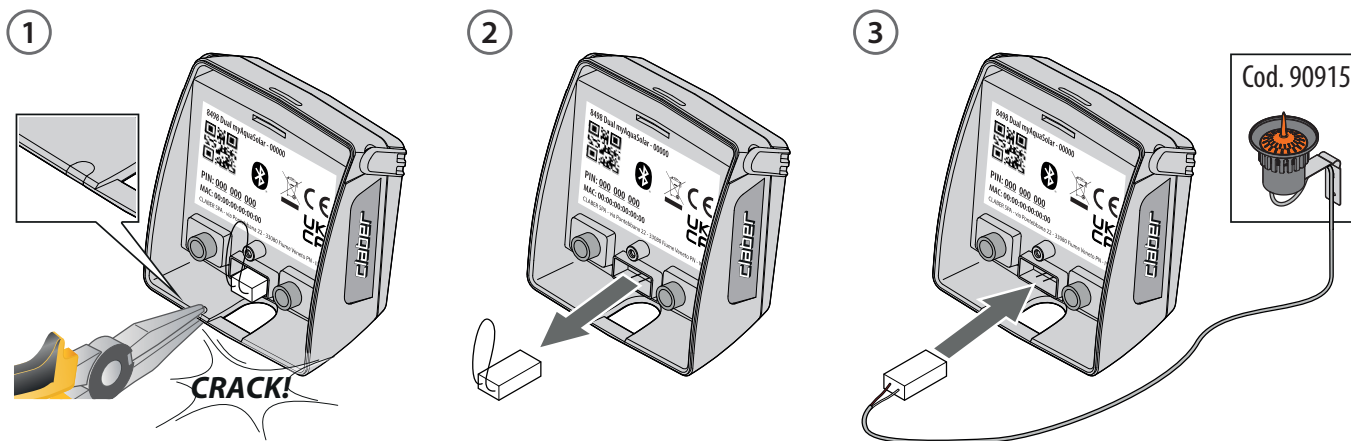
With the help of small pliers, break the plastic plug for preparing the slot of the Rain Sensor cable (1).

Remove the bridge connector on the timer (2) and insert the Rain Sensor connector (3).

The timer checks the status of the sensor: if the container is full (rainfall of at least 5 mm), watering will not start and any watering in progress will be paused within 1 minute.

Manual opening of the valve, either with a button or from the app, is enabled even with the Rain Sensor on.

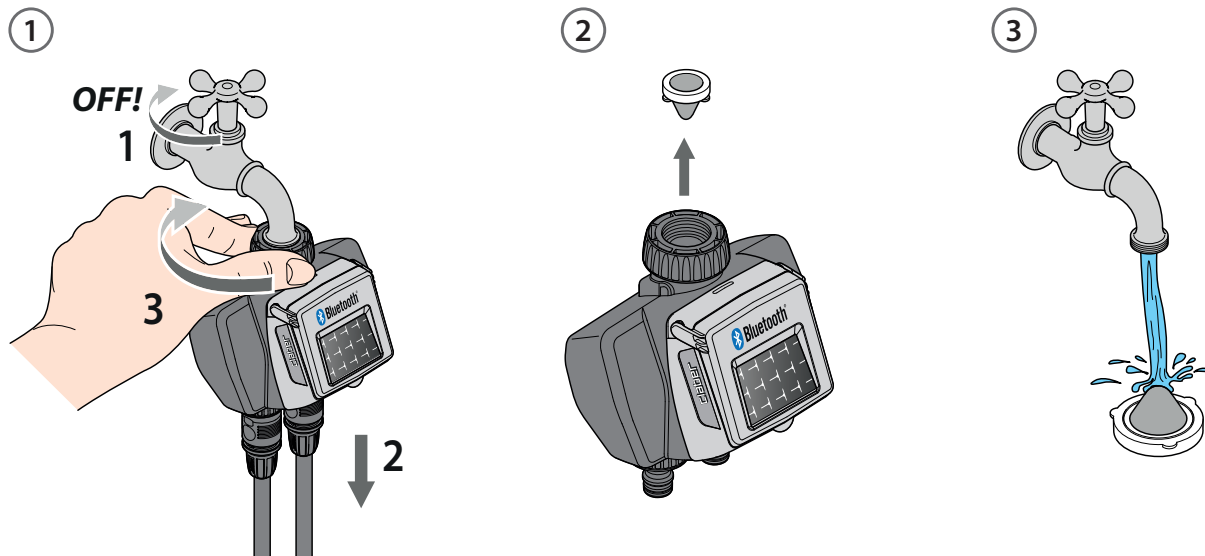
Warning: if neither the jumper nor the Rain Sensor connector are connected, the timer will only run manual irrigation programmes and not any automatic irrigation programmes.



MAINTENANCE

Check the state of the filter regularly.
Use only water to clean the product.
For any malfunction, contact Claber Customer Service.

At the end of the season, before the winter frosts, disconnect the timer from the tap and store the timer in a sheltered place, away from damp, where the temperature does not fall below 3°C.



USE

1. App myAquaSolar

Download the myAquaSolar app (available on Google Play® and the App Store®) onto your smartphone to start using the Dual myAquaSolar.

Minimum Android version required: 8.

Minimum iOS version required: 12.



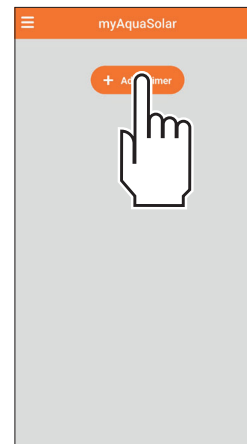
2. Pairing

During the communication between the app and the timer, you have to be within a range of 10 m from the timer. Open the myAquaSolar app (1). N.B. these operations require the use of Bluetooth®. Make sure it is activated on your smartphone. From the app's main screen, press pair a timer (2).

①



②



USE

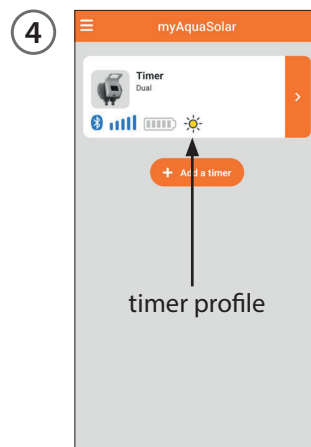
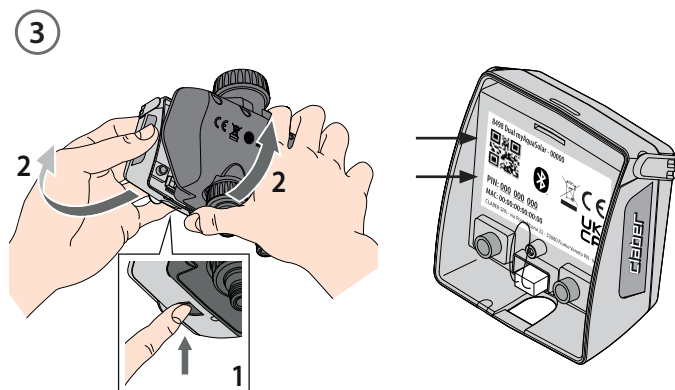
Enter the numerical code (PIN) or scan the QR code found on the back of the control unit (3).

The timer profile will appear on the main page of the app (4).

N.B. the myAquaSolar app can manage up to 4 timers.

The first time it is used, or when it is out of charge, make sure that the photovoltaic panel is lit up to enable the timer

to initiate communication via Bluetooth®. The Bluetooth® icon on the timer profile shows whether it can be reached (blue) or not (grey). If the icon is grey, the timer might not have enough light, it might not be charged (follow the instructions in First or new start-up, page 11), or it might need to be nearer to the smartphone.

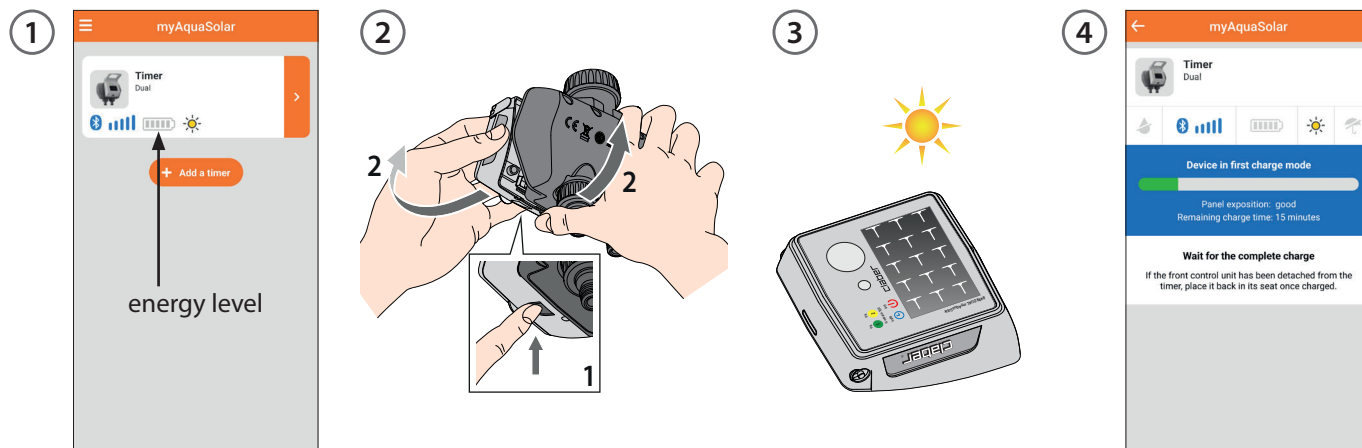


USE

3. First or new start-up

Make sure you have installed the myAquaSolar app and paired the timer: it will only be able to water if it has enough charge. To make sure it has the enough charge before using it, check the energy level icon and, if it is grey, place the timer in direct sunlight. The control unit can be disconnected from the timer and just the latter be put in direct sunlight.

If you select the timer profile in the app, it will provide information about the charge status and the time remaining until charging is completed (from 30 to 90 minutes depending on how strong the light is). Once charging is completed, reconnect the control unit. The timer can now be used.



USE

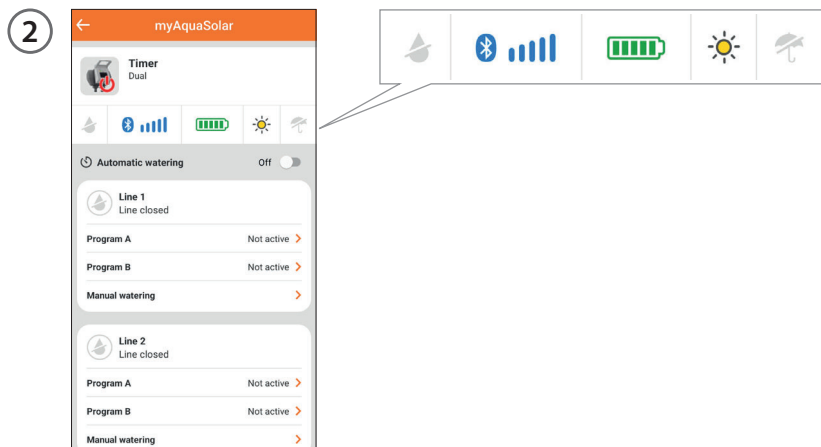
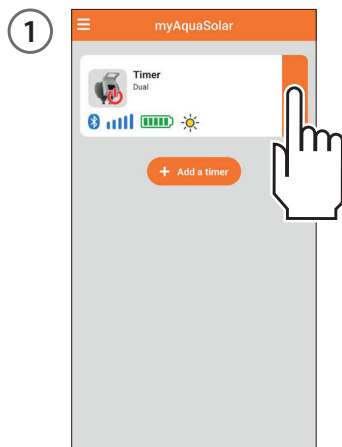
4. Timer status

Select the timer profile to see information on its status on the top bar: watering in progress, Bluetooth® signal, energy level, solar irradiation and Rain Sensor. The energy level is of particular importance.

There are 5 energy levels. If the energy level goes into **energy saving** (yellow icon), the timer will still guarantee automatic watering cycles for at least 1 day. When the

energy level is **insufficient** (red icon), all the functions will be disabled. The date and time are saved in the memory for approximately 16 hours before the timer turns off.

If the timer should run out of charge completely and turn itself off, it might start itself up again after normal exposure to the sun. If it goes off, the timer will lose the date and time setting: watering cycles might then start



USE

up in an abnormal fashion. If there is any suspicion that the timer might have been off, bring your smartphone to within 10 m of it to automatically update the date and time and, after checking that the Bluetooth® icon is blue, press the product profile in the app.

If the data is unavailable, wait until charging is completed (First or new start-up).

Data
unavailable



Energy
levels



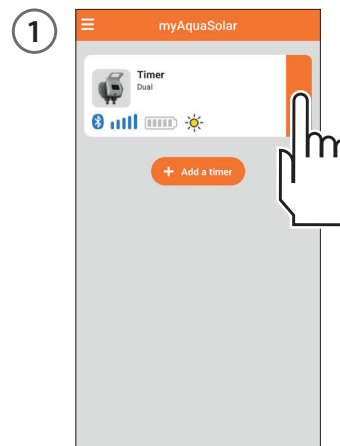
energy saving



insufficient

5. Automatic programming

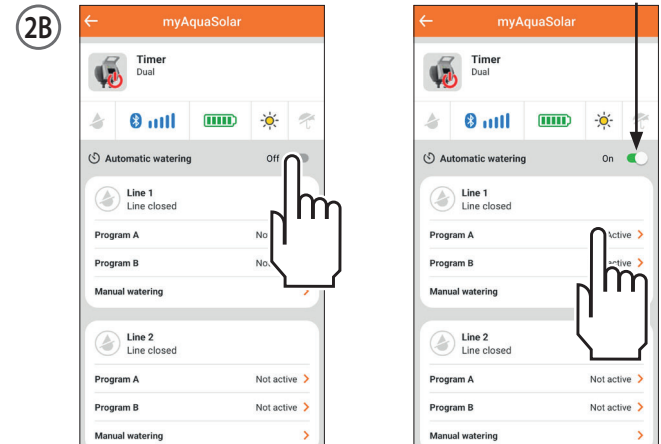
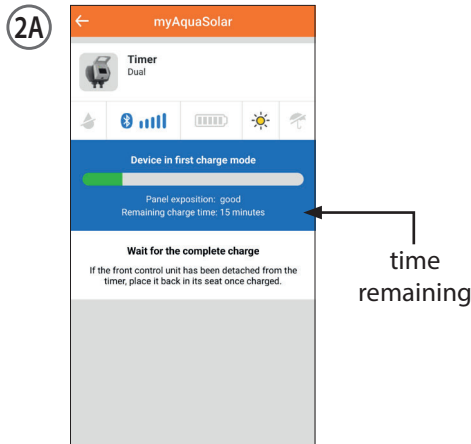
(1) Tap the timer profile to start programming.



USE

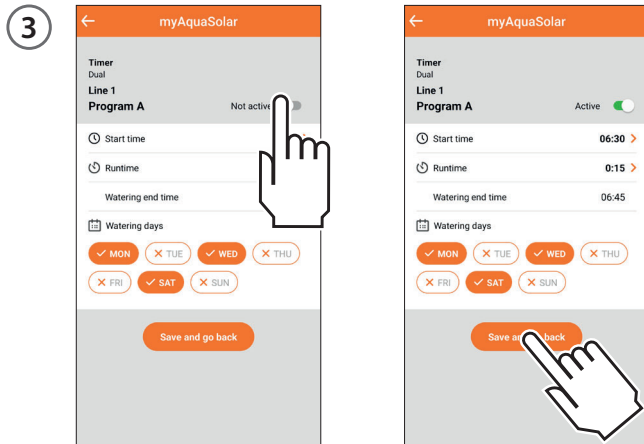
(2A) The level of charge in the timer might not be adequate and the app will notify you of this. It will be necessary to wait for charging to be completed, making sure the photovoltaic panel is directly exposed to the sun to speed up the process (First or new start-up).

2B) If the timer is sufficiently charged, you can enable/disable automatic watering, set/change the watering programmes or activate manual watering. To enable automatic watering, move the toggle button to ON. Dual myAquaSolar offers 2 irrigation programmes, A and B, for each line.



USE

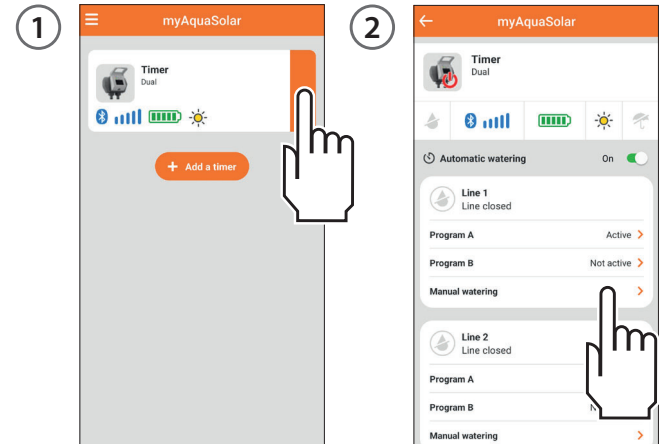
(3) You can set a start time, duration (from 1 minute to 3 hours and 59 minutes) and the days of the week you want to irrigate on for each programme. If you want the programme set to be operational immediately, make sure that the toggle button is on. Press the Save key and return to confirm the settings.



6. Manual watering from app

You can run manual irrigation from the myAquaSolar app or directly from the timer.

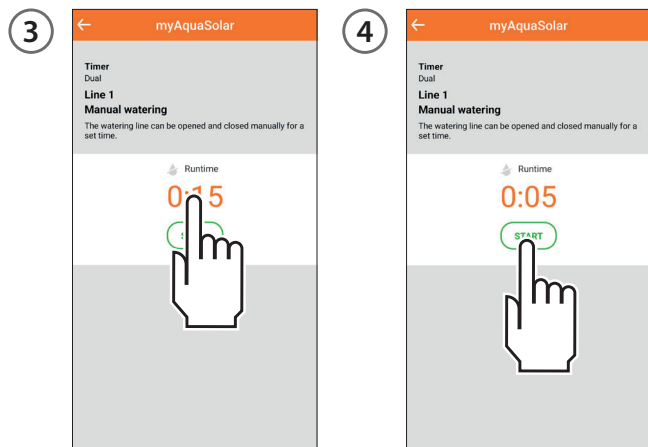
To activate manual watering from the app, press the timer profile and then select the manual watering option for the desired line.



USE

By pressing on the information about the watering run time you can select the run time for manual watering. To start watering, press START.

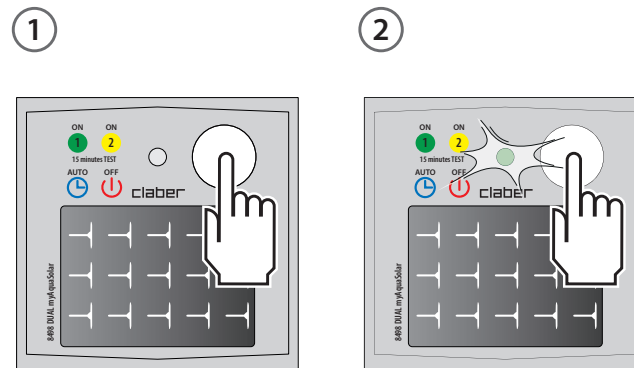
Manual watering can be paused before it is finished by pressing STOP.



7. Manual watering from timer

You can run manual irrigation from the myAquaSolar app or directly from the timer.

To activate manual irrigation from the timer, repeatedly press the Dual myAquaSolar button until the LED flashes green or yellow, according to the desired line. In this case, manual irrigation will run for 15 minutes on the chosen

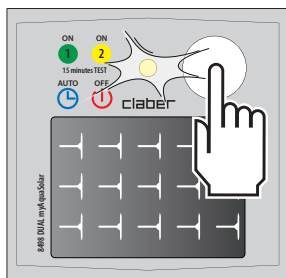


USE

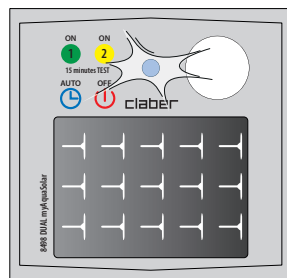
line.

To pause it before it is finished, repeatedly press the timer key to set the desired status: automatic watering on (blue LED flashes) or no automatic watering (red LED flashes).

3



4



FAQ

The Bluetooth® icon stays grey.

Causes:

- the wrong PIN was entered during PAIRING. Delete the timer on the app. Repeat the PAIRING process.
- the timer is not charged and the photovoltaic panel does not have enough light. Bring the timer into the sunlight and try again.
- there are obstructions present or the smartphone is too far away from the timer. Make sure that Bluetooth® is turned on on your smartphone, go nearer to the timer and try again.

How do I delete a timer from the myAquaSolar app?

From the app's main screen open the menu and select the timer you want to delete, then press the Delete timer button.

What happens if I delete a timer from the myAquaSolar app?

A timer deleted from the app continues the automatic watering cycles set but will no longer appear on the app's main screen.

Watering will not start.

Check that:

- the tap is turned on;
- the timer is not charging for the first time;
- the timer has enough charge;
- the automatic watering switch is On;
- the programmes are correctly set and turned on.

The irrigation cycles start at different times than those set by the myAquaSolar app.

The timer could be completely flat so the date and time have been lost. To automatically update the date and time bring your smartphone to within 10 m and, after checking that the Bluetooth® icon on the app is blue, select it. Check the watering programmes that have been set.

The timer only works in manual mode.

If the Rain Sensor is not used, make sure that the jumper is correctly inserted into the casing. If the Rain Sensor is in use, check on the myAquaSolar app whether it shows the rain status (blue umbrella on the timer profile). If there are no conditions for the Rain Sensor to show the rain status, check that it has been connected correctly.

FAQ

Can I stop a manual irrigation cycle before the end?

Yes, by selecting the timer on the myAquaSolar app, and then tapping STOP on the manual watering page. Or on the timer, by repeatedly pressing the button until the desired status is set: automatic watering on (blue LED flashes) or no automatic watering (red LED flashes).

Can I stop an automatic irrigation cycle before the end?

Yes, by selecting the timer on the myAquaSolar app, and then tapping STOP on the manual watering page. Or on the timer, by repeatedly pressing the button until the desired status is set: automatic watering on (blue LED flashes) or no automatic watering (red LED flashes).

Can I run automatic and manual irrigations at the same time?

No. During manual irrigation, automatic irrigation cycles are suspended and deactivated.

While a manual irrigation cycle is running on one line, can I start manual irrigation on another?

Yes, but the second manual irrigation cycle will close the line that was previously open.

Can I reset the timer?

Yes, you can. Before carrying out a reset, make sure you are in a well-lit area so that the timer will restart. Never carry out a reset when the timer is watering: the flow of water might not stop. To reset the timer, hold down its button for 20-30 seconds, until the LED stops flashing. Press the button again to check the LED switches on. The time, date and irrigation programmes from before the reset will be retained.

Can I control the timer from more than one smartphone?

Yes, you can. Carry out the pairing process on each smartphone.

If a name has been assigned to the timer and its lines on the app, you must repeat this operation on each smartphone.

Warning: avoid connecting 2 or more smartphones to the same timer at the same time.

DISPOSAL



The symbol in question applied to the product or the packaging indicates that the product must not be considered as normal domestic waste, but must be taken to a special centre for the collection and recycling of waste electrical and electronic equipment. Take care to dispose of this product in the proper way; this will help to avoid the negative consequences that could arise from unsorted collection or dumping. For more detailed information on the recycling of this product, contact the municipal authority, the local refuse collection service or the dealer from whom the item was purchased.

DECLARATION OF CONFORMITY



Claber S.P.A. Via Pontebbana, 22
33080 Fiume Veneto - Pordenone
Italy

Assuming full responsibility, we declare that the product

8498 - Dual myAquaSolar

complies with the applicable European and British directives, as per the Declarations of Conformity accessible via the following link:



www.claber.com/conformity/

Fiume Veneto, 12/2023

Managing Director Claber S.P.A.
Ing. Gian Luigi Spadotto

A handwritten signature in black ink, which appears to be the name of the Managing Director, Gian Luigi Spadotto.

CONDITIONS OF GUARANTEE

This device is guaranteed for 3 years from the date of purchase as indicated by the invoice, bill or till receipt issued at the time of the transaction, which must be kept. Claber guarantees that the product is free of material or manufacturing defects.

Within 3 years from the date of delivery to the consumer, Claber shall repair or replace any parts of this product found to be defective.

The warranty is void in the event of:

- Lack of proof of purchase (invoice, receipt or cash register receipt);
- Use or maintenance different from what is specified;
- Disassembly or tampering by unauthorised personnel;
- Faulty installation of the product;
- Damages from atmospheric agents or contact with chemical agents;

Claber accepts no liability for products that it has not manufactured, even if used in combination with its own products.

The costs and the risks associated with shipment are met entirely by the owner. Assistance is provided by Claber authorized service centres.

TRADEMARK ATTRIBUTION FOOTNOTE

App Store is a trademark registered by Apple Inc.

Android, Google Play and the Google Play logo are trademarks registered by Google LLC.

The Bluetooth® brand and logo are registered trademarks owned by Bluetooth SIG, Inc. and are used under licence by Bluetooth SIG, Inc.

Claber S.p.A. does not claim any right over the third-party trademarks listed.

CLABER SPA - Via Pontebbana, 22
33080 Fiume Veneto PN - Italy
Tel. +39 0434 958836 - Fax +39 0434 957193
info@claber.com - www.claber.com

Represented in UK by:
Authorised rep Compliance Ltd., ARC House,
Thurnham, Lancaster, LA2 0DT, UK.

The Claber logo consists of the word "claber" in a bold, lowercase, sans-serif font. The letters are white with a black outline, set against a solid orange rectangular background. A small registered trademark symbol (®) is located at the bottom right of the letter 'r'.

claber®